

PDCL Antibody (N-term)
Purified Rabbit Polyclonal Antibody (Pab)
Catalog # AW5123

Specification

PDCL Antibody (N-term) - Product Information

Application	IHC-P, WB,E
Primary Accession	Q13371
Other Accession	Q63737 , Q9DBX2 , Q2HJA9
Reactivity	Human
Predicted	Bovine, Mouse, Rat
Host	Rabbit
Clonality	Polyclonal
Calculated MW	H=34;M=34;Rat=34 KDa
Isotype	Rabbit IgG
Antigen Source	HUMAN

PDCL Antibody (N-term) - Additional Information

Gene ID 5082

Antigen Region
1-30

Other Names
Phosducin-like protein, PHLP, PDCL, PHLOP1, PhLP1

Dilution
IHC-P~~1:25
WB~~1:1000

Target/Specificity
This PDCL antibody is generated from a rabbit immunized with a KLH conjugated synthetic peptide between 1-30 amino acids from the N-terminal region of human PDCL.

Format
Purified polyclonal antibody supplied in PBS with 0.09% (W/V) sodium azide. This antibody is purified through a protein A column, followed by peptide affinity purification.

Storage
Maintain refrigerated at 2-8°C for up to 2 weeks. For long term storage store at -20°C in small aliquots to prevent freeze-thaw cycles.

Precautions
PDCL Antibody (N-term) is for research use only and not for use in diagnostic or therapeutic procedures.

PDCL Antibody (N-term) - Protein Information

Name PDCL

Synonyms PHLOP1, PhLP1

Function

Acts as a positive regulator of hedgehog signaling and regulates ciliary function. [Isoform 2]: Acts as a negative regulator of heterotrimeric G proteins assembly by trapping the preloaded G beta subunits inside the CCT chaperonin.

Cellular Location

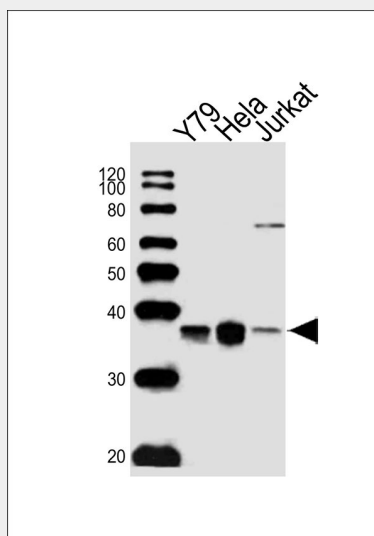
Cell projection, cilium {ECO:0000250|UniProtKB:Q9DBX2}

PDCL Antibody (N-term) - Protocols

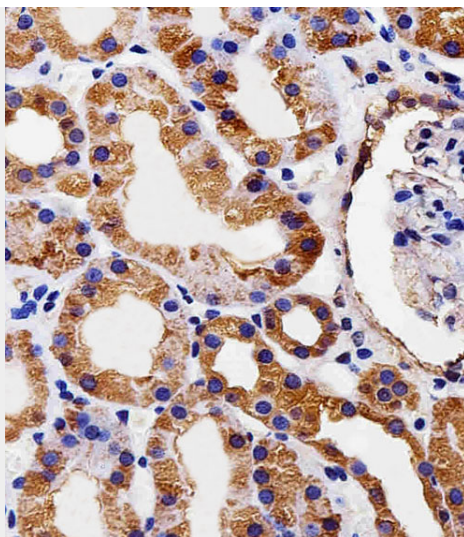
Provided below are standard protocols that you may find useful for product applications.

- [Western Blot](#)
- [Blocking Peptides](#)
- [Dot Blot](#)
- [Immunohistochemistry](#)
- [Immunofluorescence](#)
- [Immunoprecipitation](#)
- [Flow Cytometry](#)
- [Cell Culture](#)

PDCL Antibody (N-term) - Images



Western blot analysis of lysates from Y79, HeLa, Jurkat cell line (from left to right), using PDCL Antibody (N-term) (Cat. #AW5123). AW5123 was diluted at 1:1000 at each lane. A goat anti-rabbit IgG H&L (HRP) at 1:10000 dilution was used as the secondary antibody. Lysates at 20 µg per lane.



Immunohistochemical analysis of paraffin-embedded H.kidney section using PDCL Antibody (N-term)(Cat#AW5123). AW5123 was diluted at 1:25 dilution. A peroxidase-conjugated goat anti-rabbit IgG at 1:400 dilution was used as the secondary antibody, followed by DAB staining.

PDCL Antibody (N-term) - Background

Isoform 1: Functions as a co-chaperone for CCT in the assembly of heterotrimeric G protein complexes, facilitates the assembly of both Gbeta-Ggamma and RGS-Gbeta5 heterodimers.

PDCL Antibody (N-term) - References

Lazarov M.E.,et al.Submitted (OCT-1997) to the EMBL/GenBank/DDBJ databases.
Wiemann S.,et al.Genome Res. 11:422-435(2001).
Ota T.,et al.Nat. Genet. 36:40-45(2004).
Humphray S.J.,et al.Nature 429:369-374(2004).
Mural R.J.,et al.Submitted (JUL-2005) to the EMBL/GenBank/DDBJ databases.